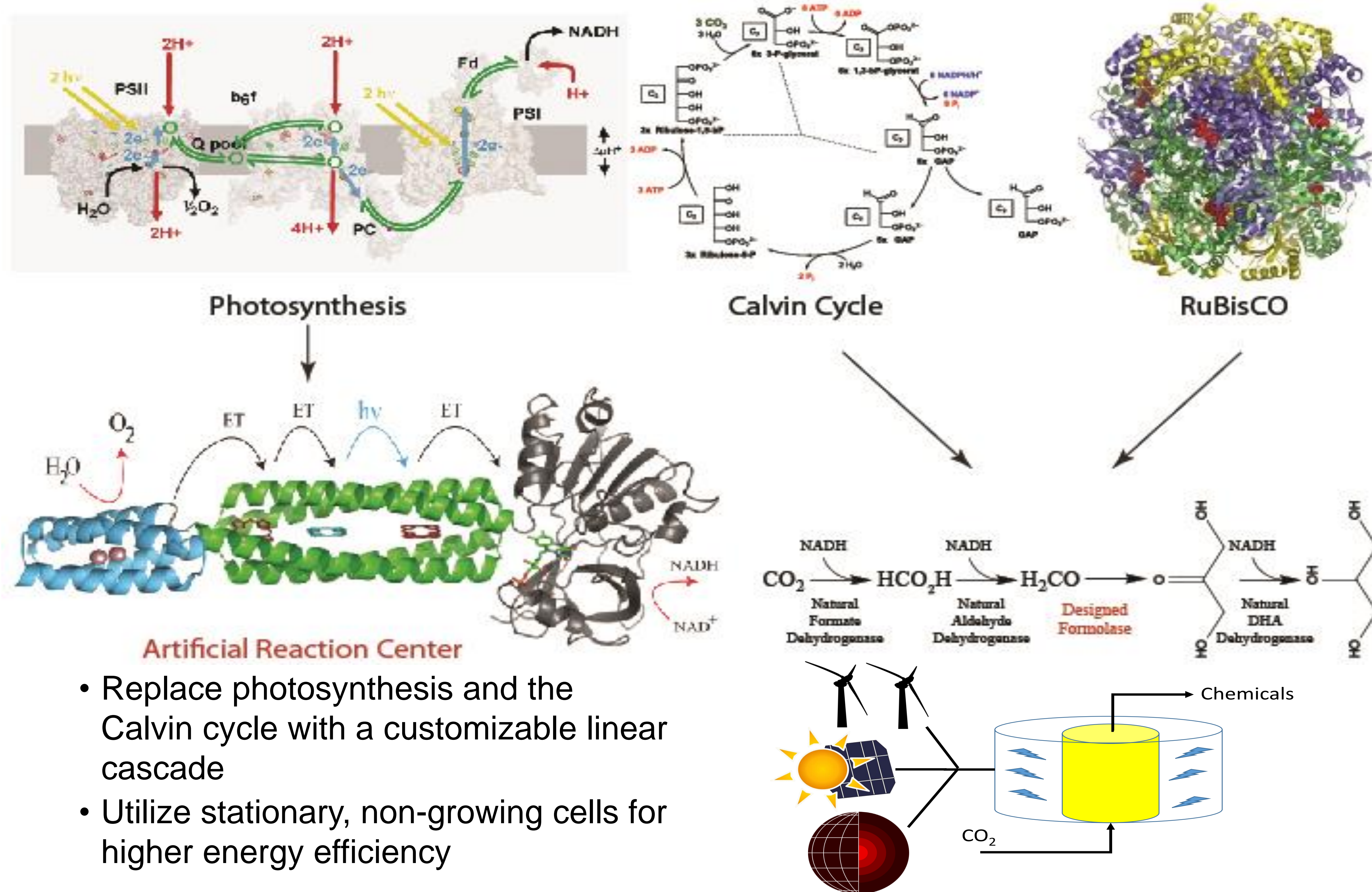
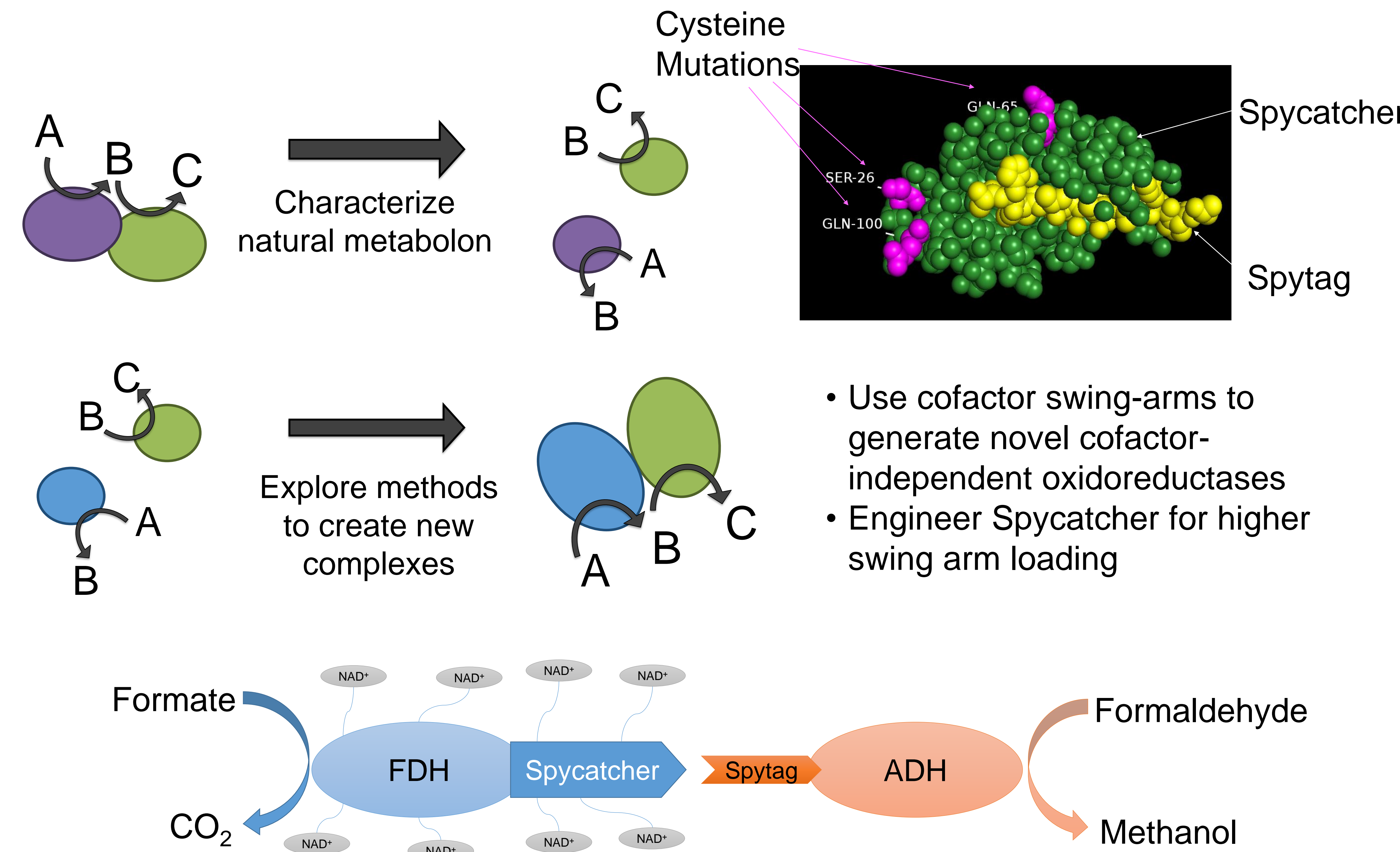


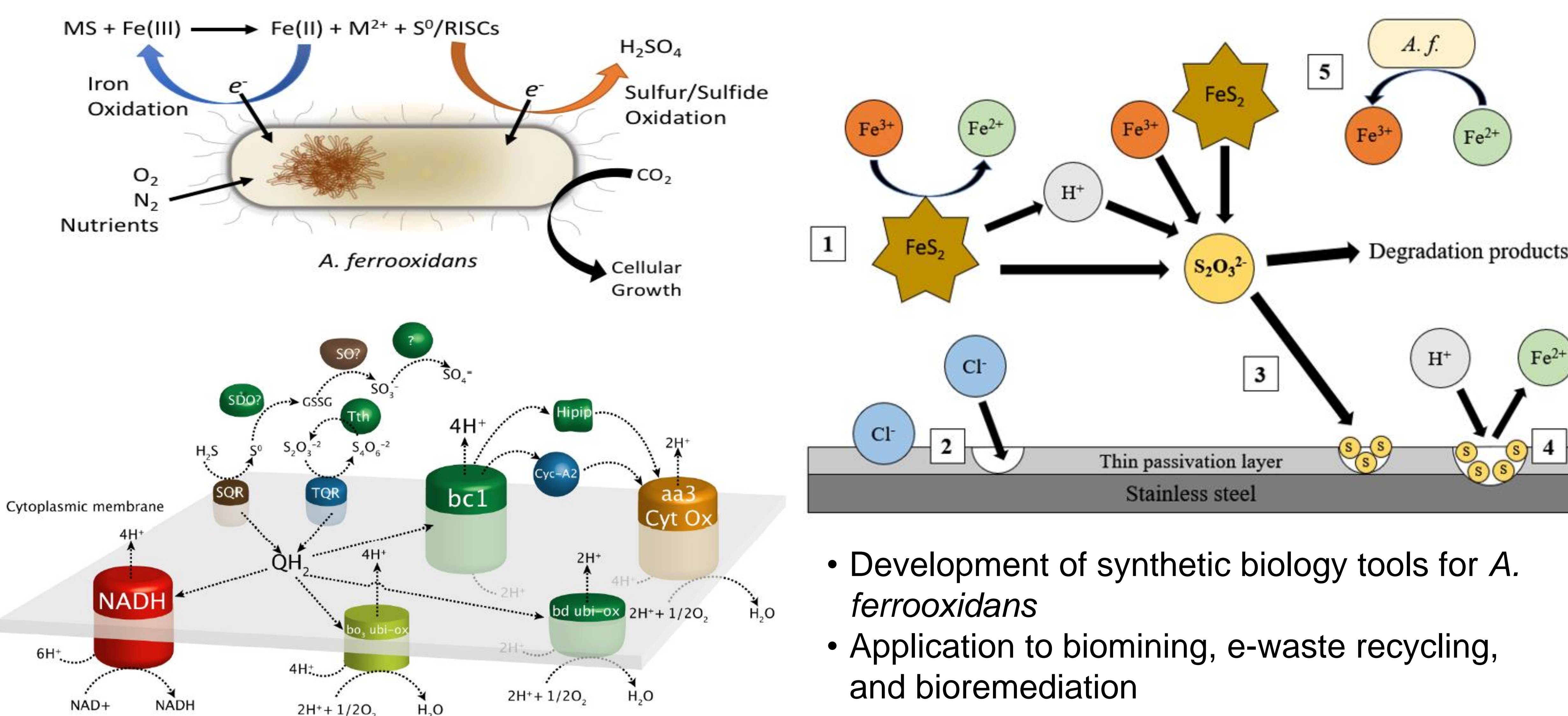
## Design and Engineering of a Synthetic Carbon Fixation Pathway



## Engineering Multi-enzyme Complexes for More Efficient Catalysis



## Engineering *A. ferrooxidans* for Enhanced Microbiologically Influenced Corrosion (MIC)



## Creation of a Synthetic Pathway to Mimic Oxidative Phosphorylation

